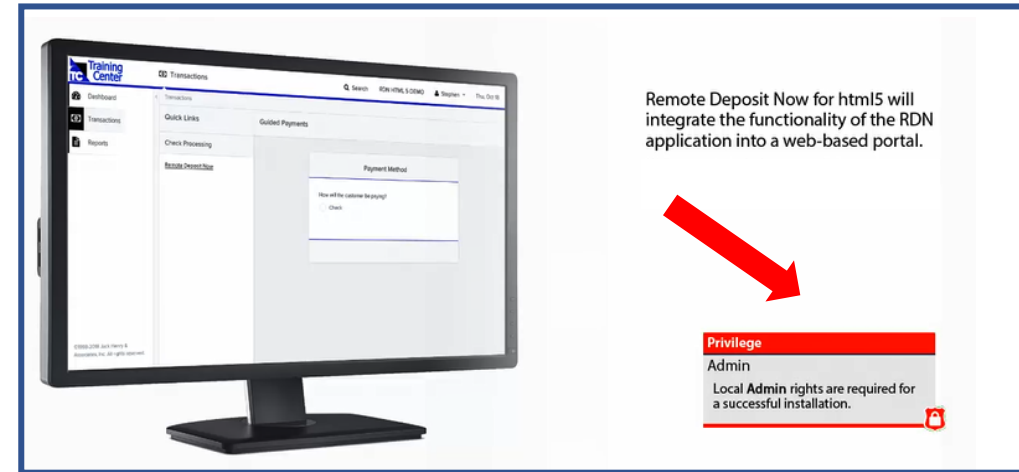


2021

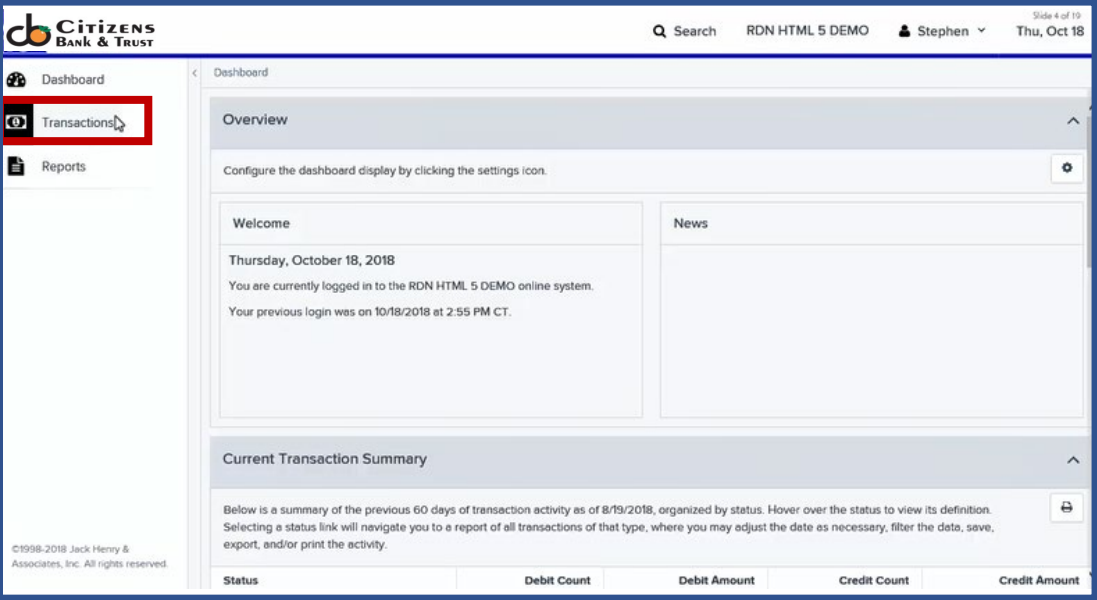
# INSTALLING REMOTE DEPOSIT ANYWHERE SCANNER & DRIVERS

Welcome to Remote Deposit Now installation guide.

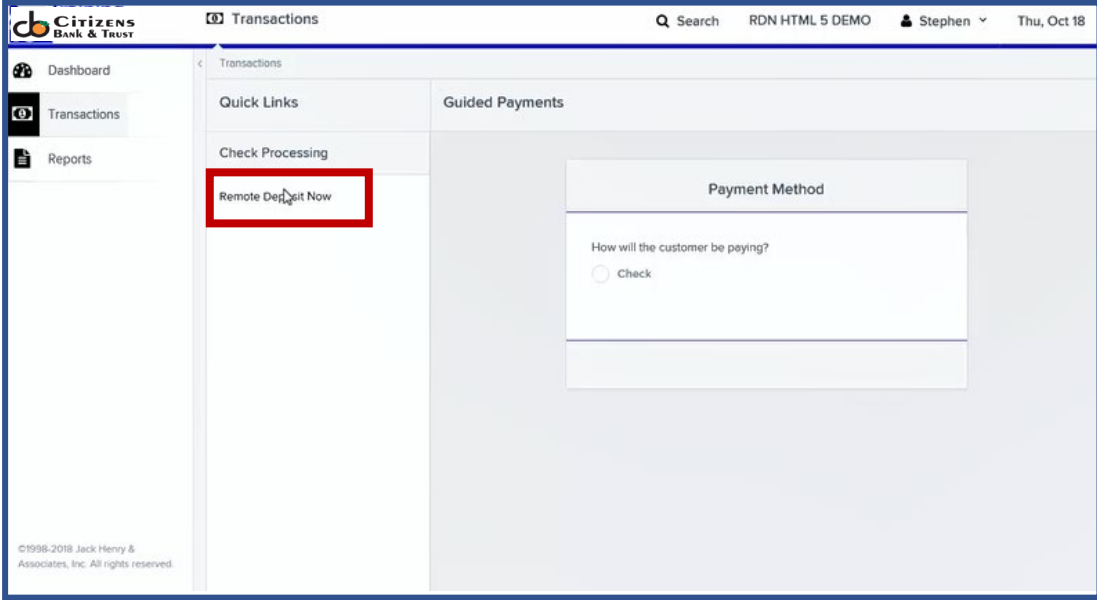
You will need Admin rights to install.



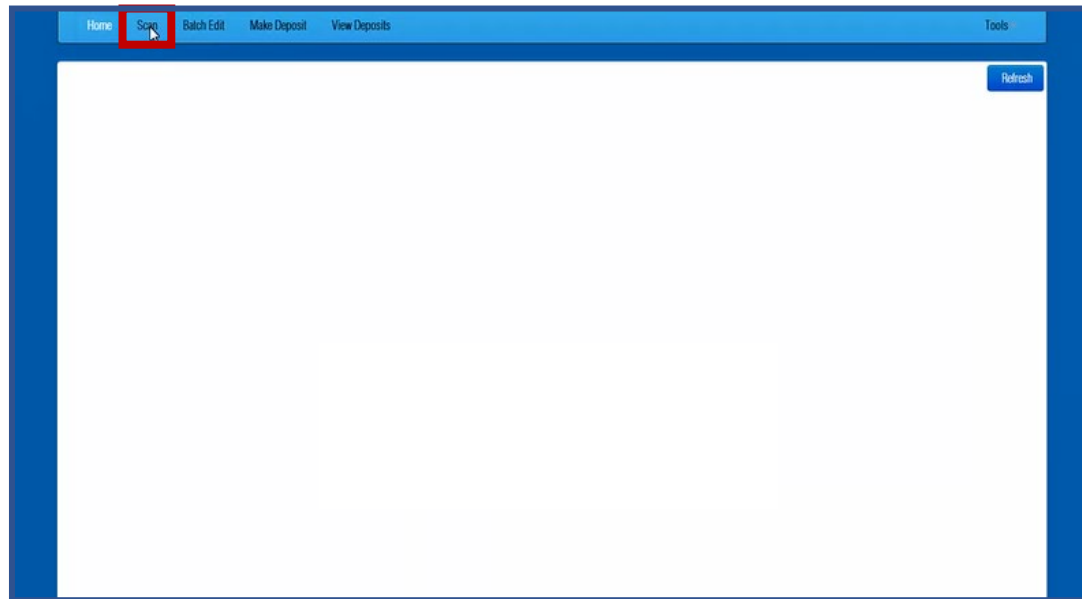
After logging in to SmartPay Business, from the navigation on the left, click **Transactions**.



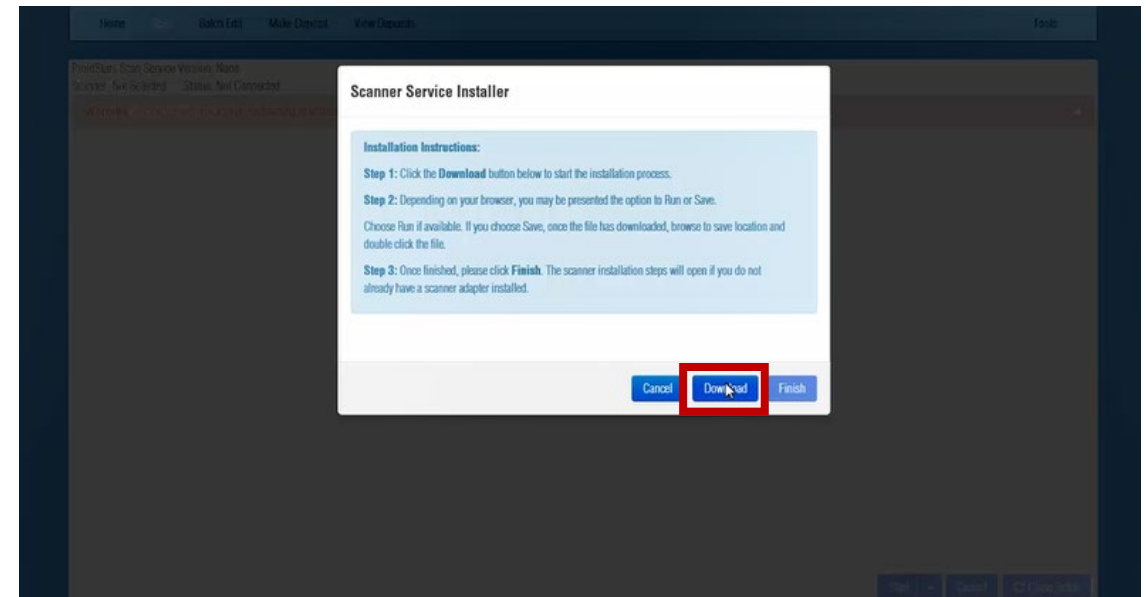
Under the quick links section, click **Remote Deposit Now**.



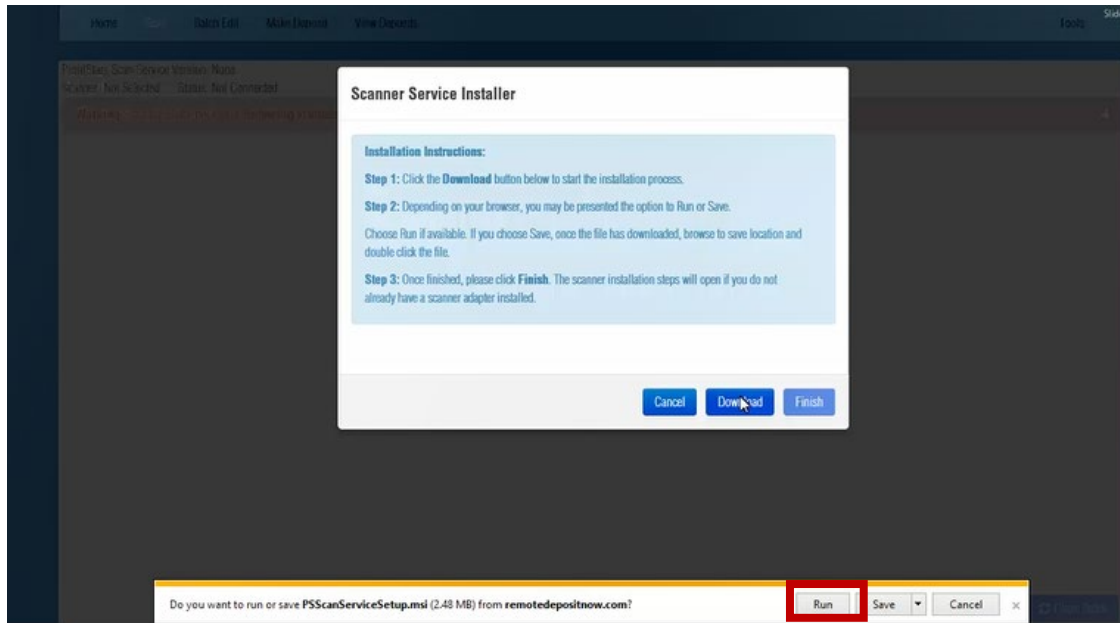
After the Remote Deposit Now Portal loads from the navigation at the top of the screen, click **Scan**.



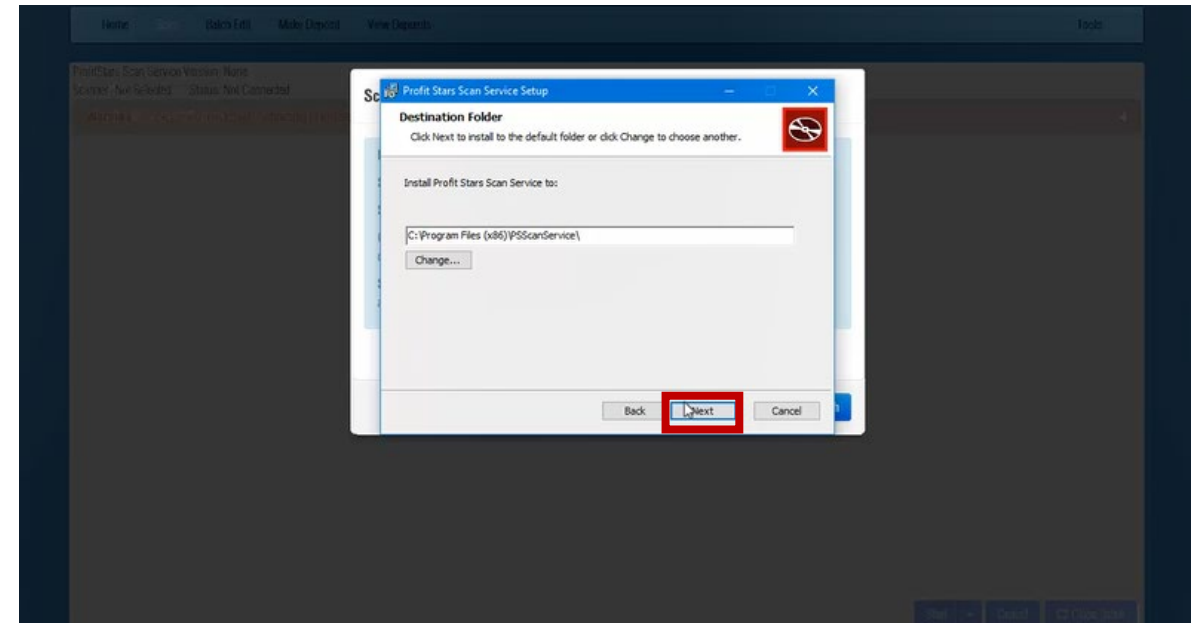
The Scanner Service Installer window displays the three step installation instructions. Click **Download**.



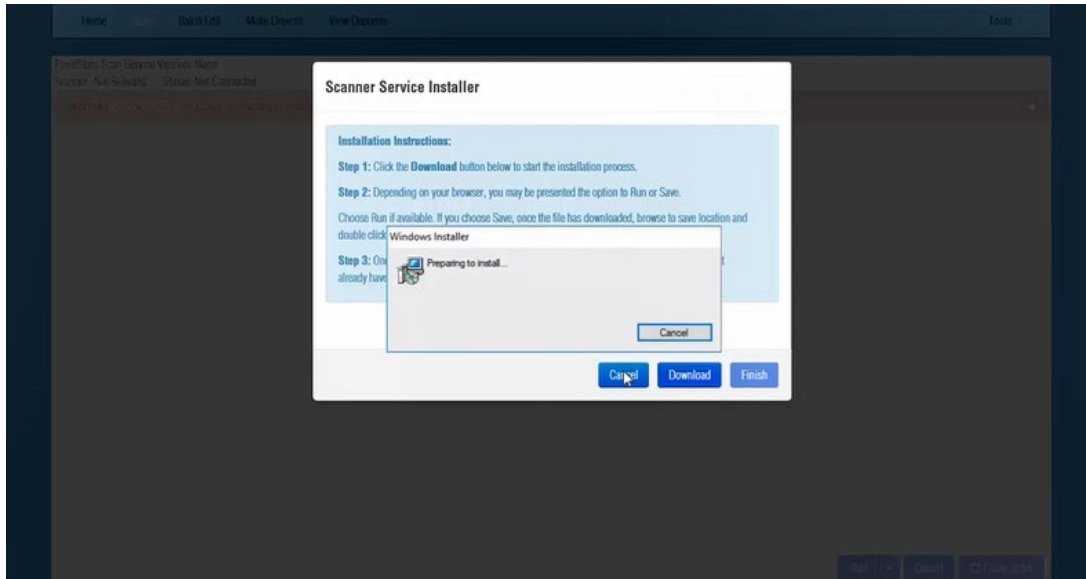
If you are using Internet Explorer or Edge, click **Run**.



If this is your default installation location click **Next**. If not, change to the location you choose and click **Next**.

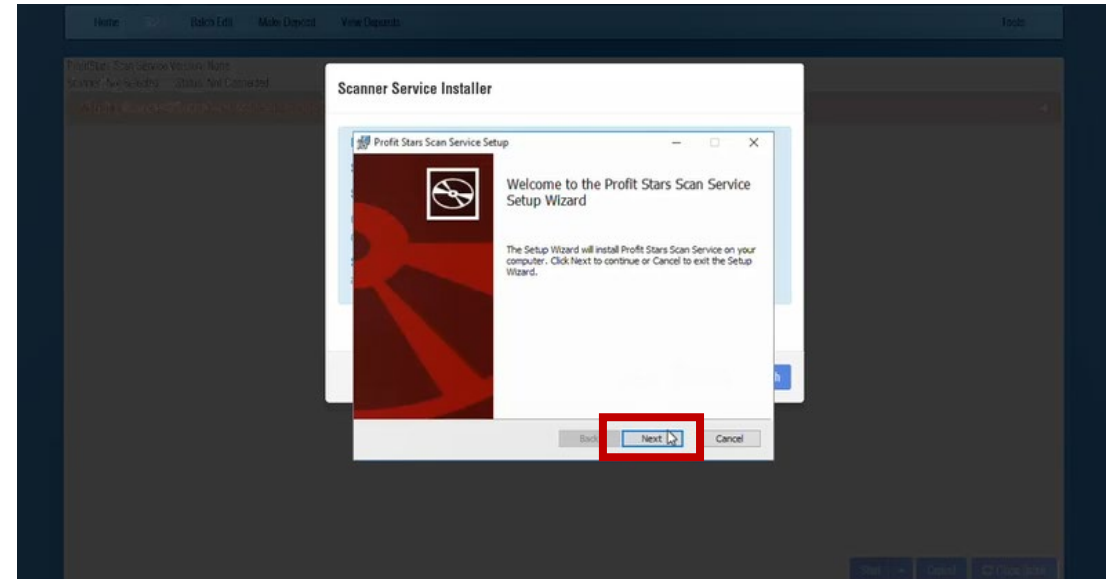


To complete the installation process using the controls at the bottom of each window to progress through each step.

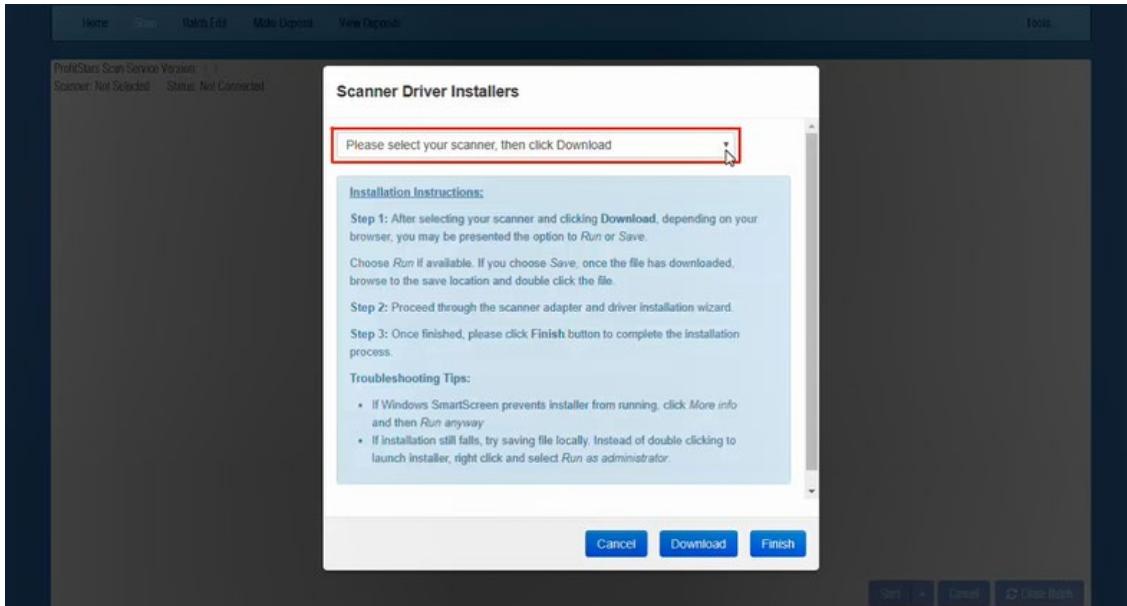


Click **Finish** to complete the installation process.

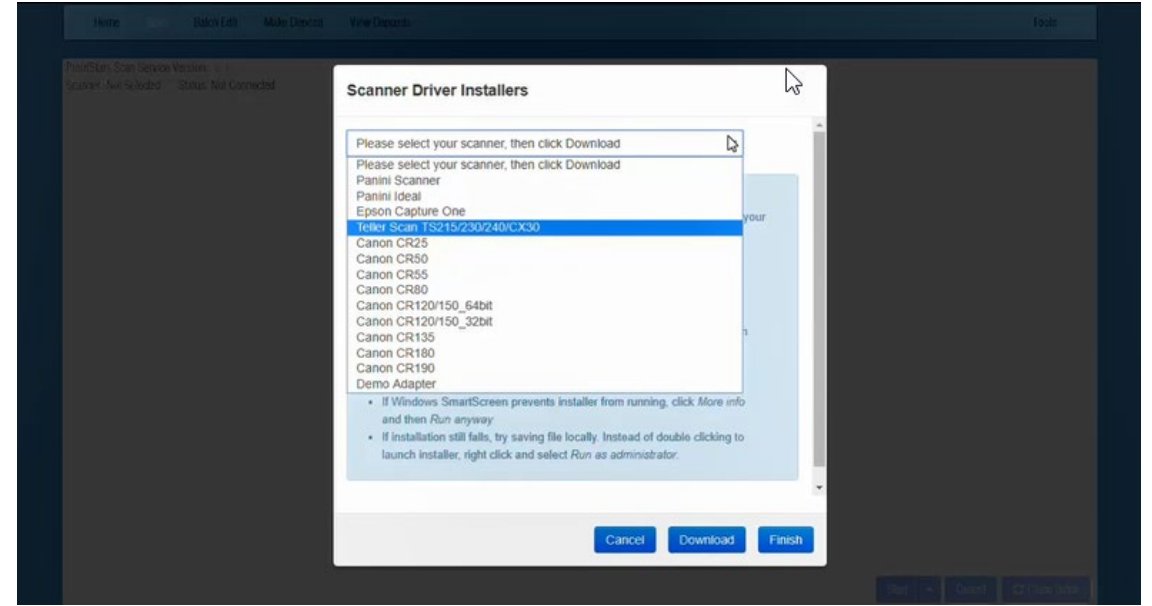
Now let's download the drivers!



Use the **drop-down menu** at the top.

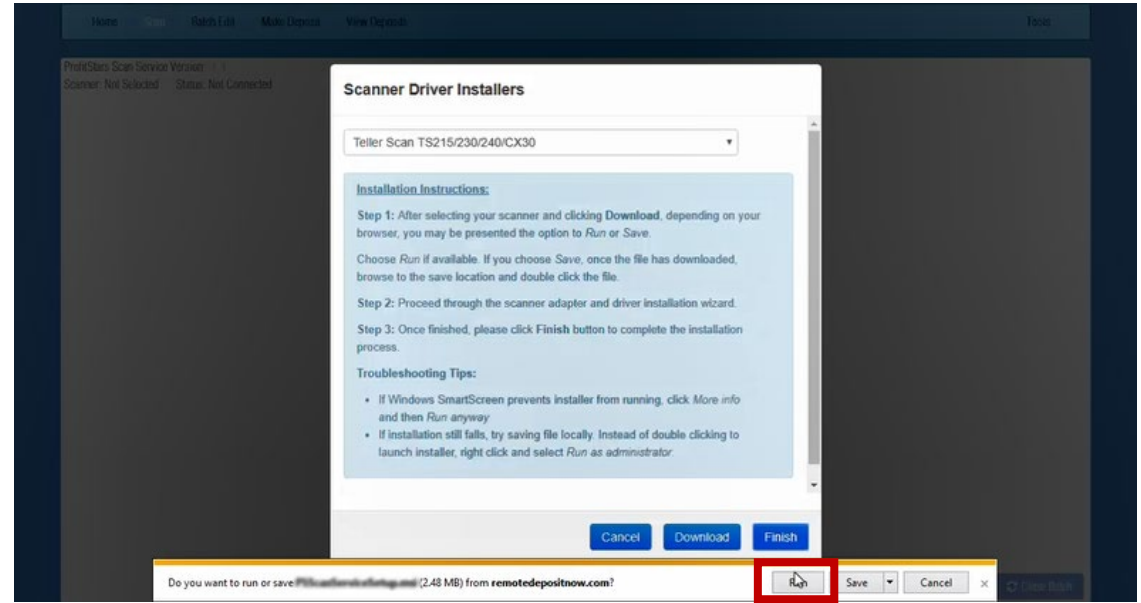
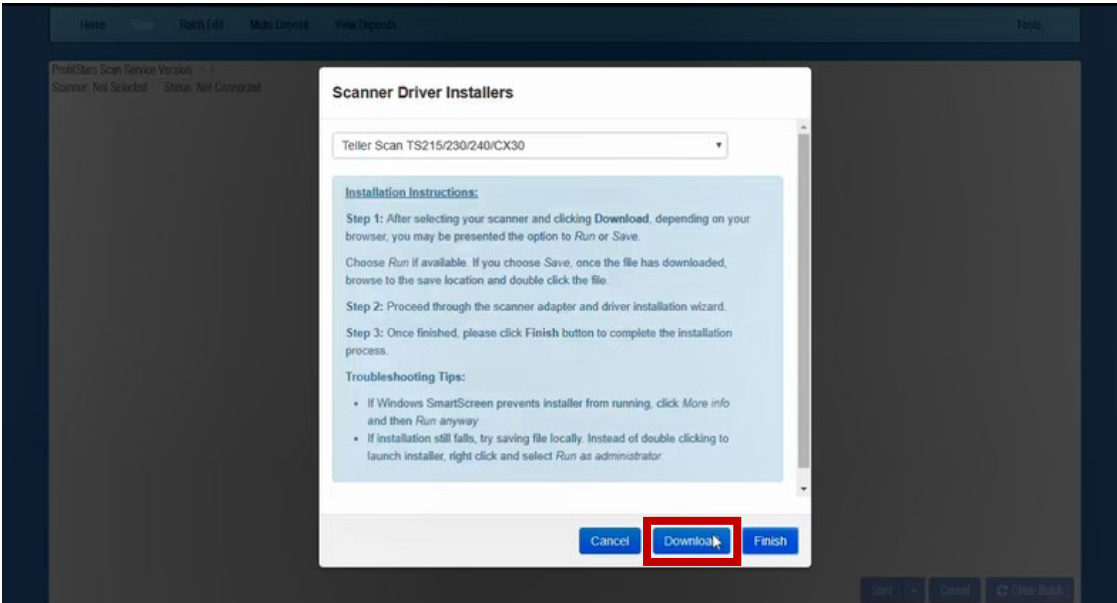


Select the scanner you want to install.



After choosing the make and model of scanner, click **Download**.

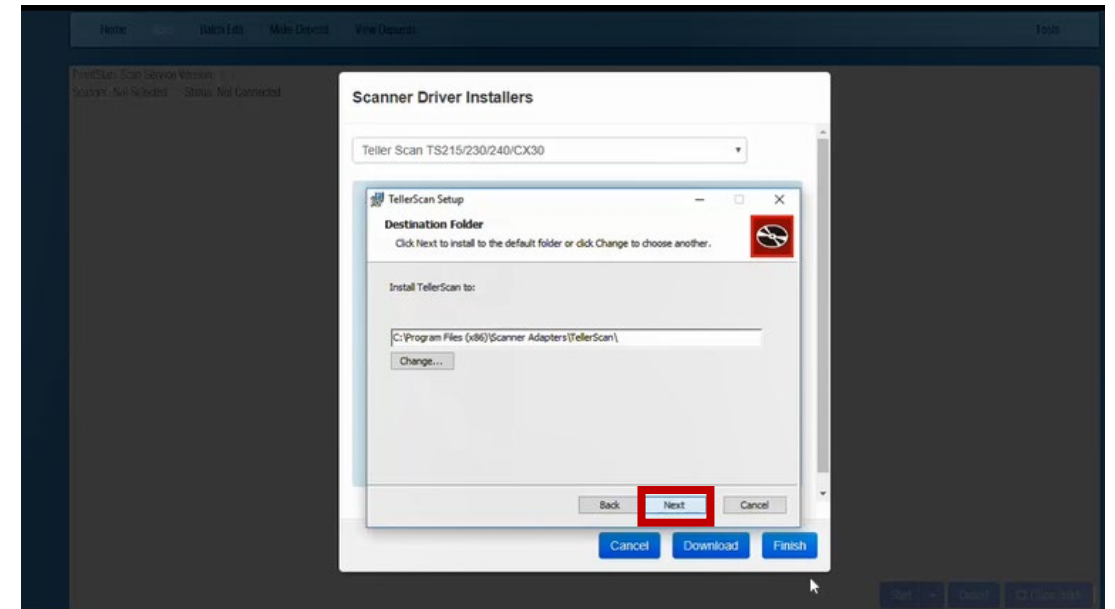
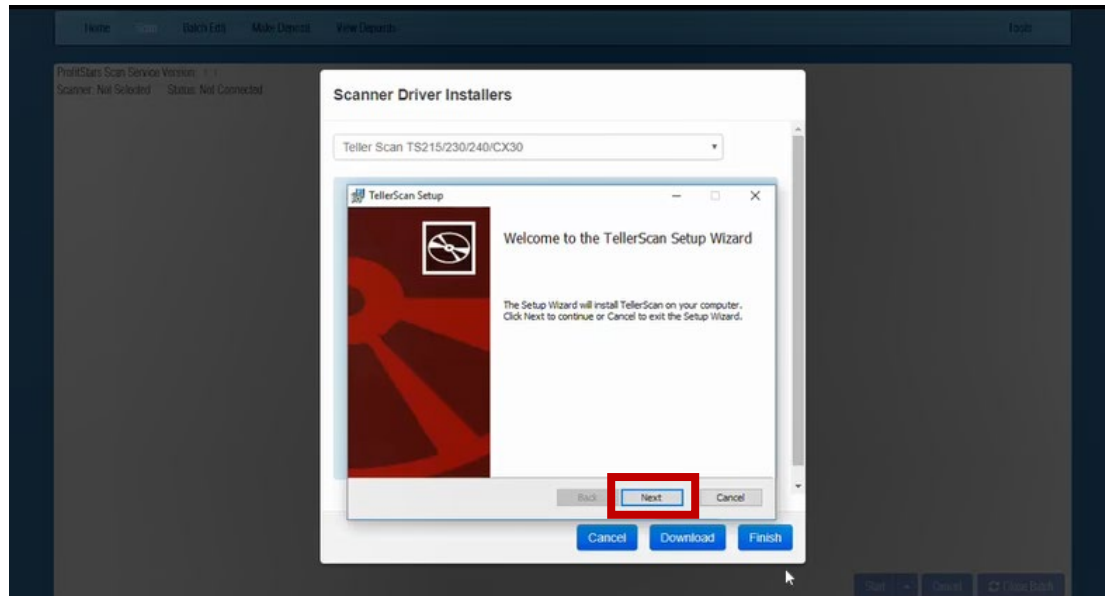
If you are using Internet Explorer or Edge, click **Run**.



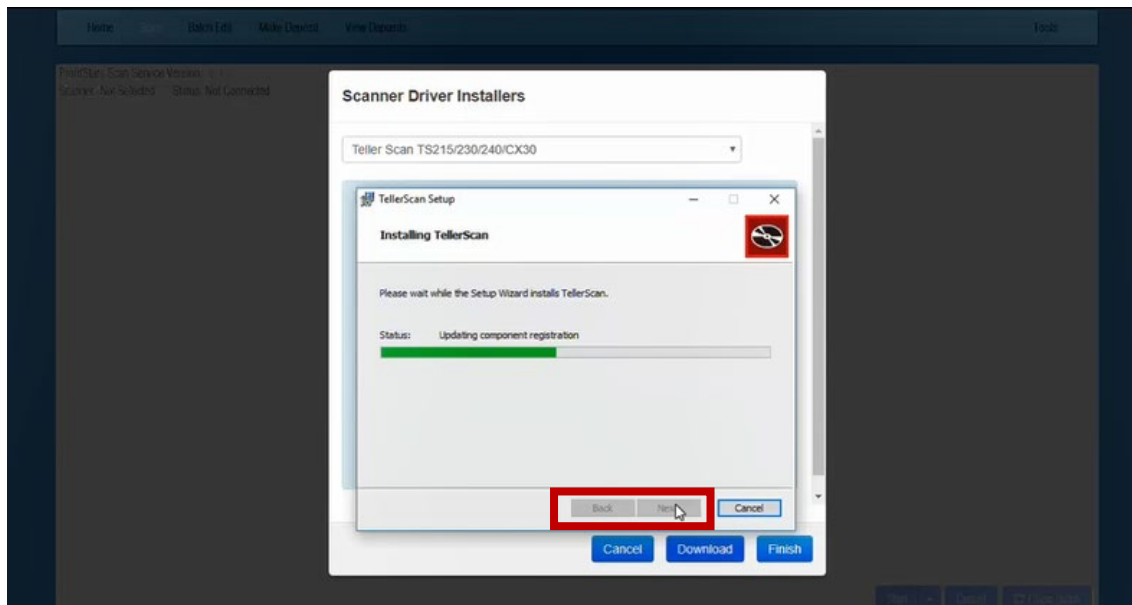


Click **Next** to begin install.

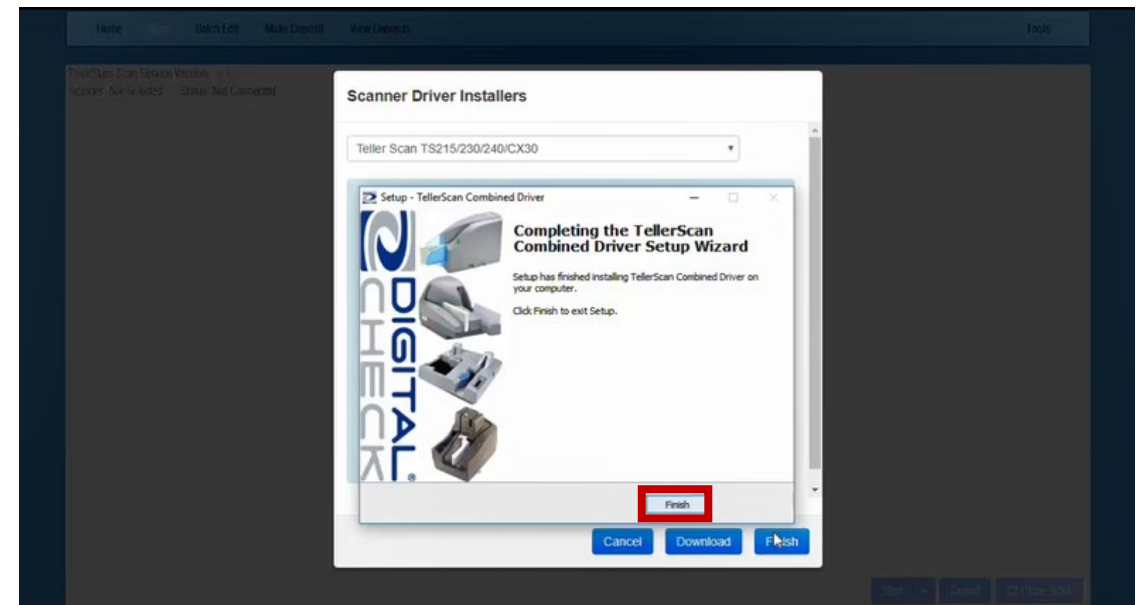
If this is your default installation location click **Next**. If not, change to the location you choose and click **Next**.



Using the controls at the bottom of each window to progress through each step.



After the installation completes, click **Finish**.

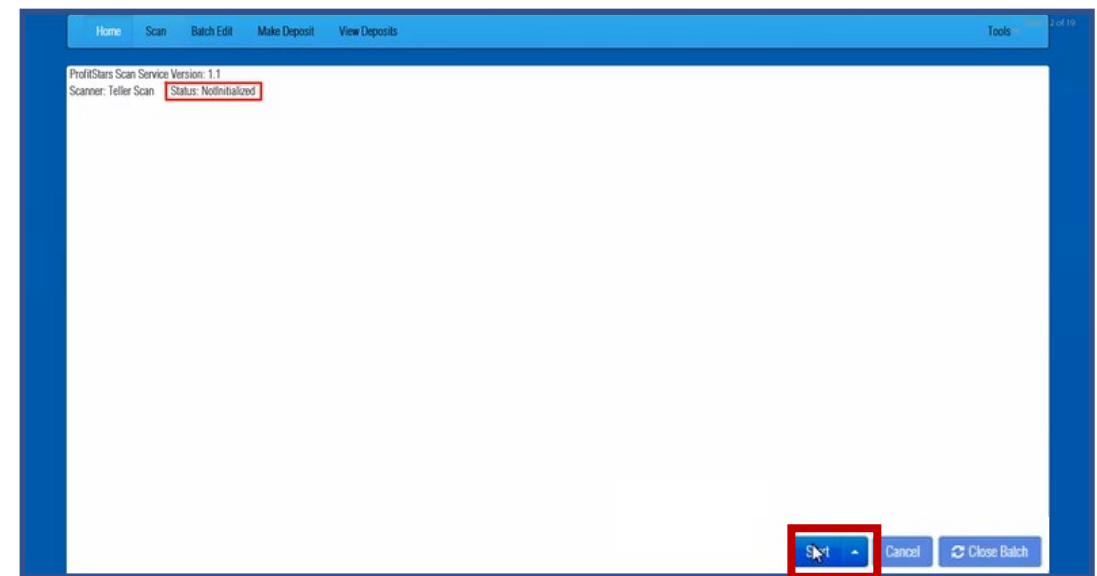
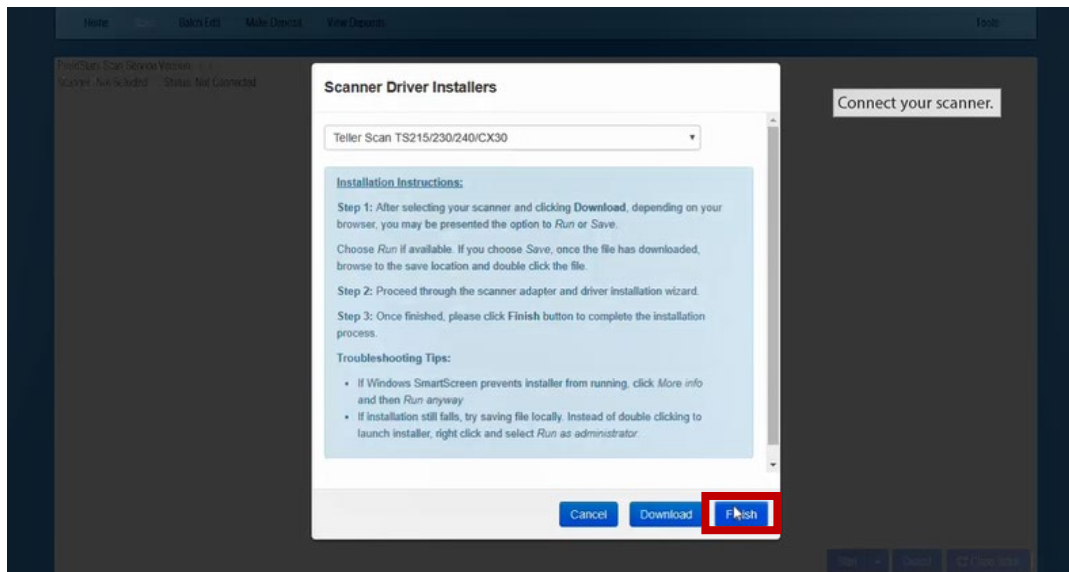


Click **Finish**.

Now it's time to connect your scanner.

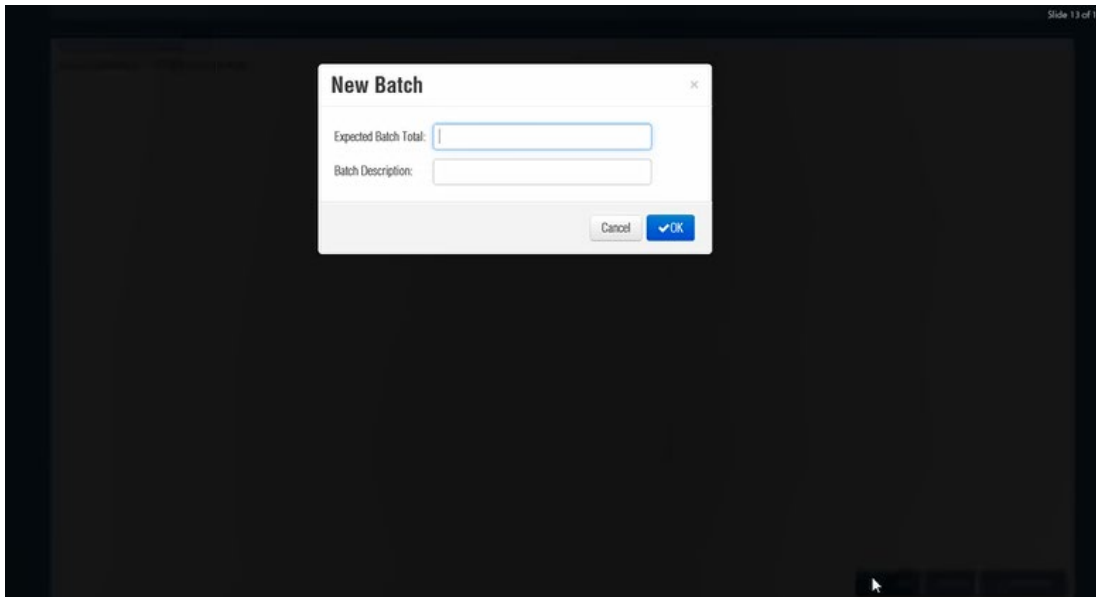
Notice that the scanner is not yet initialized.

The next step is to create a new batch deposit.  
Click **Start**.

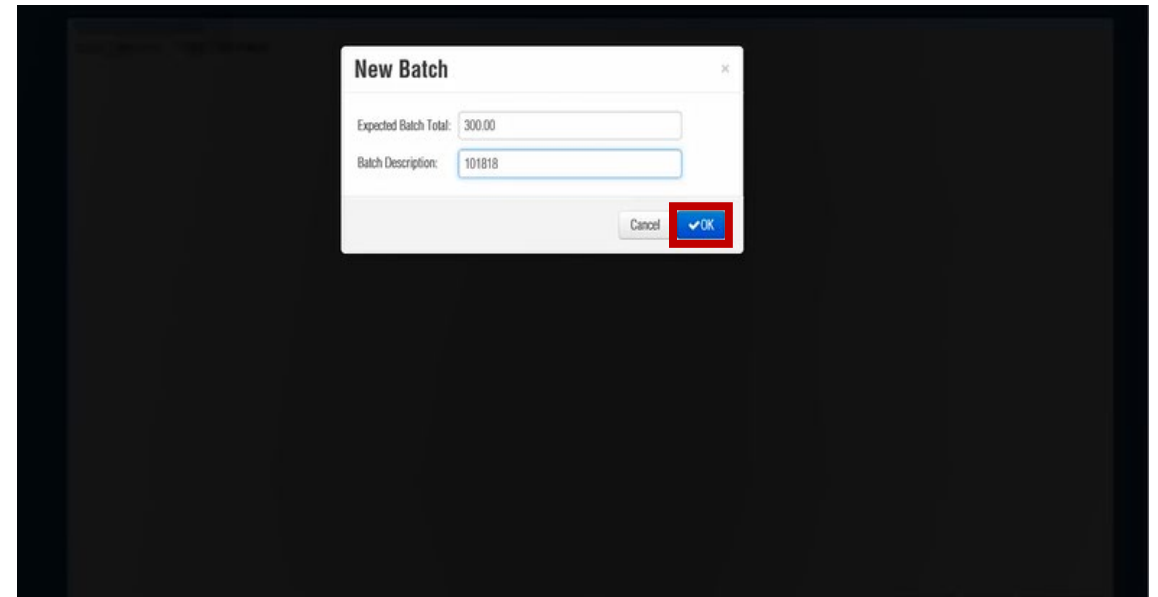


The new batch window opens.

Enter the expected Batch Total and Batch Description in the appropriate fields and click **OK** to submit the batch.



A screenshot of a software interface showing a 'New Batch' dialog box. The dialog box has a title bar with a close button (X). Inside, there are two input fields: 'Expected Batch Total:' and 'Batch Description:'. Both fields are currently empty. At the bottom right of the dialog box, there are two buttons: 'Cancel' and 'OK' (with a checkmark icon). The background of the application window is dark, and the dialog box is light gray.



A screenshot of the same 'New Batch' dialog box, but now the input fields are filled. The 'Expected Batch Total:' field contains the value '300.00' and the 'Batch Description:' field contains the value '101818'. The 'OK' button is now highlighted with a red square, indicating it should be clicked to submit the batch. The 'Cancel' button remains visible next to it.

The Batch information appears below the Scanner information.

ProfitStars Scan Service Version: 1.1  
Scanner: Teller Scan    Status: NotInitialized  
10/18/2018 03:25 PM Batch Number 270 - Stephen - 101818

Sequence	Codeline	Item
----------	----------	------

Start   Cancel   Close Batch

This screenshot shows the ProfitStars Scan Service interface. The status is 'NotInitialized'. The batch information is displayed below the scanner information. The 'Start' button is visible at the bottom right.

Then the Scanner Status will update. Once the scanner is initialized, checks may be scanned. Click **Start**.

ProfitStars Scan Service Version: 1.1  
Scanner: Teller Scan    Status: Initialized  
10/18/2018 03:25 PM Batch Number 270 - Stephen - 101818

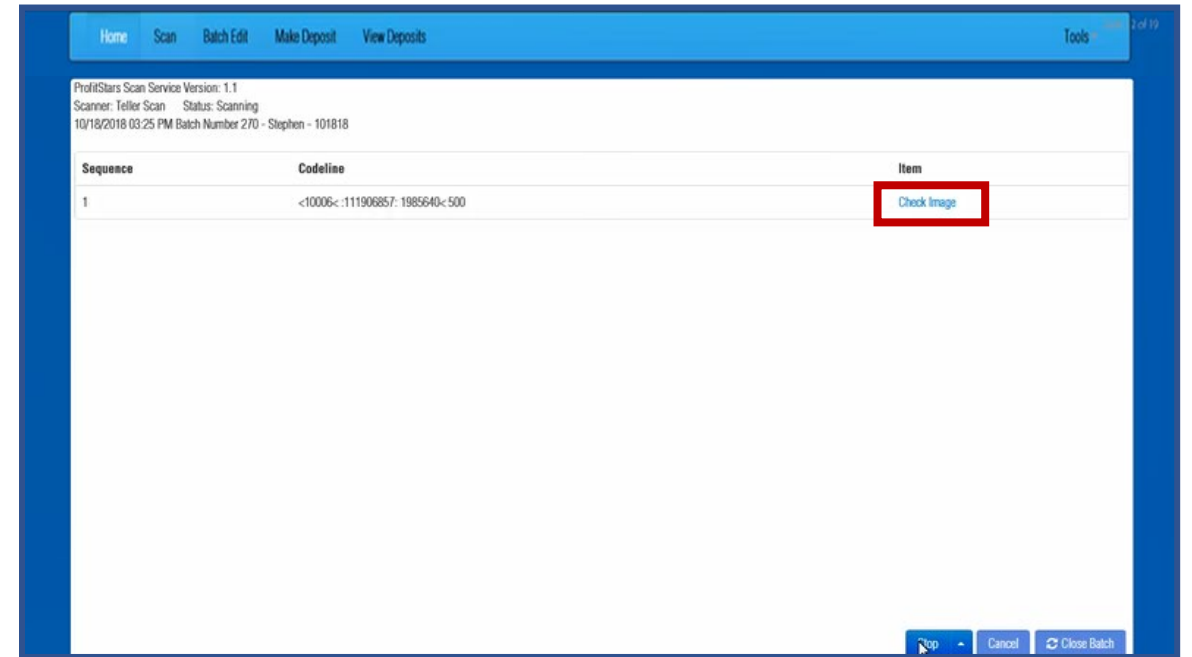
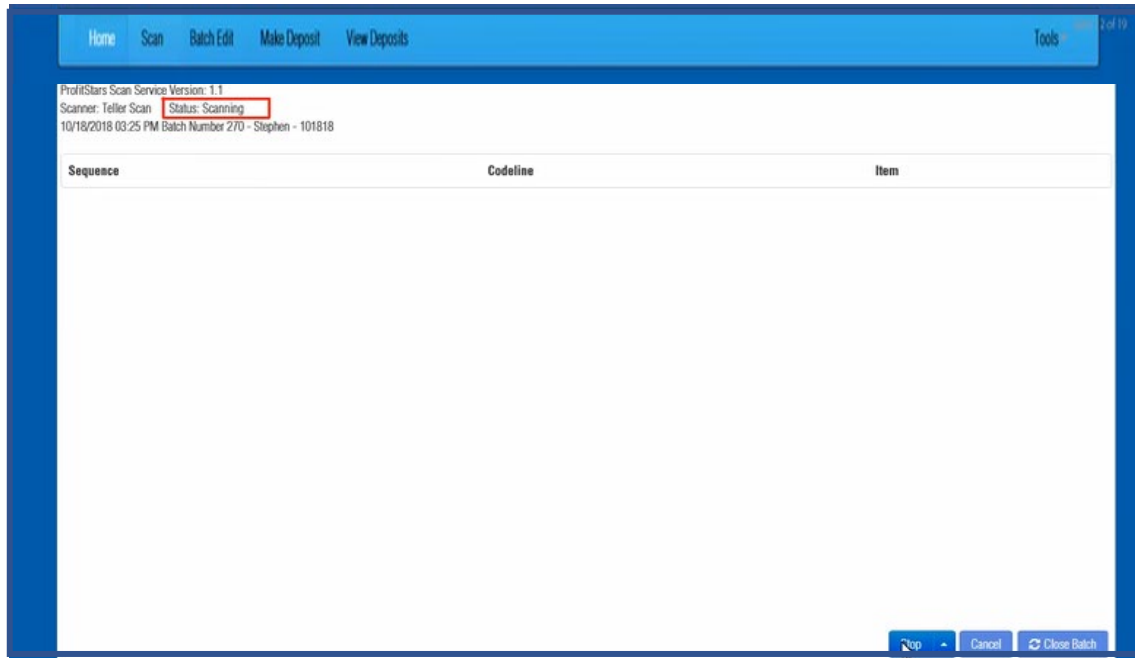
Sequence	Codeline	Item
----------	----------	------

Start   Cancel   Close Batch

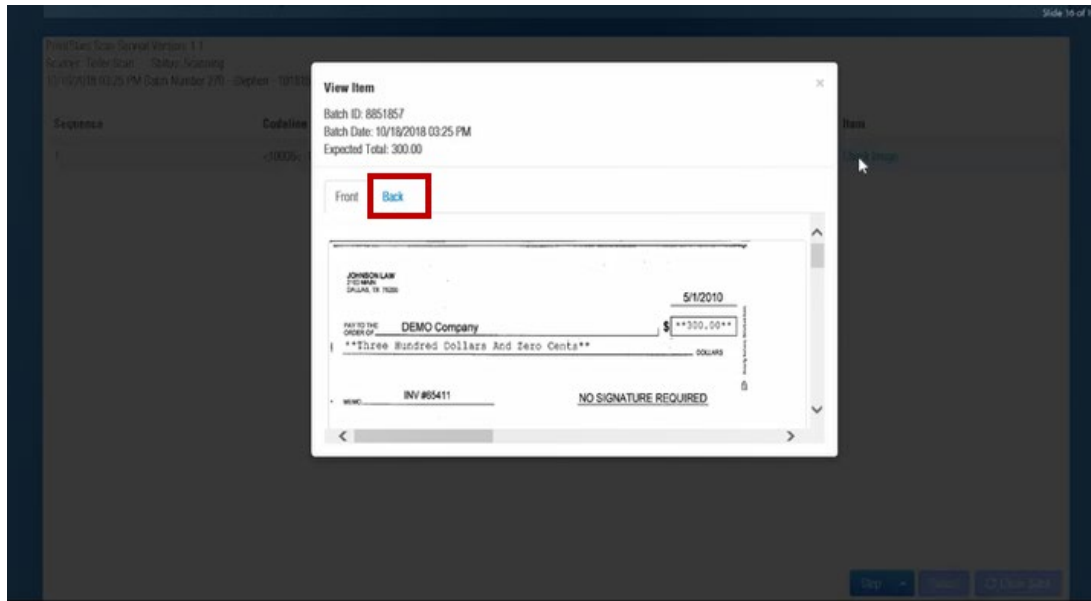
This screenshot shows the ProfitStars Scan Service interface after the scanner has been initialized. The status is now 'Initialized'. The 'Start' button is highlighted with a red box, indicating it should be clicked to begin scanning.

The Status updates....

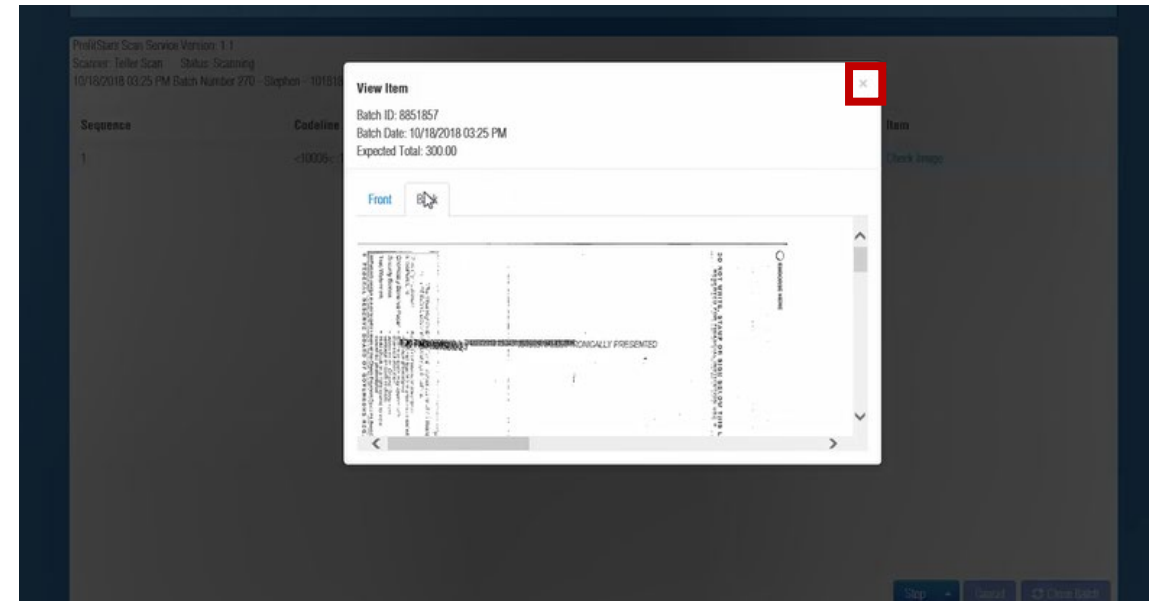
...and the scanned check images are available for review. To look at the check images click on each **Check Image** link.



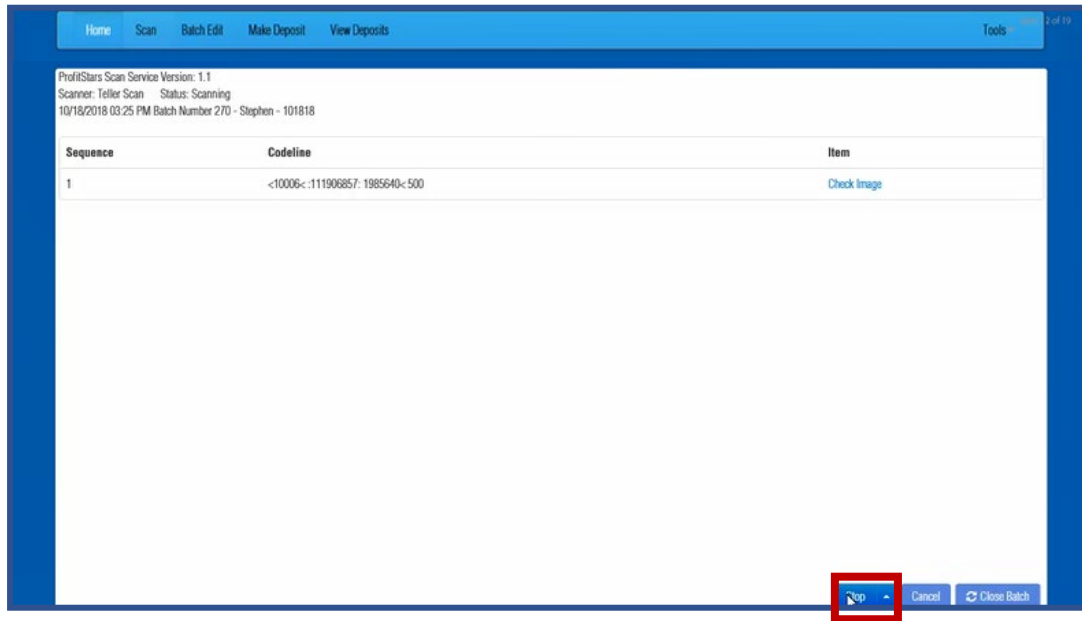
The check image window opens displaying the front image of the check. Click **Back**.



The back image of the check appears. Click **X** to close the window.



To complete, click **Stop** and...



... click **Close Batch**.

